

Deck Worksheet

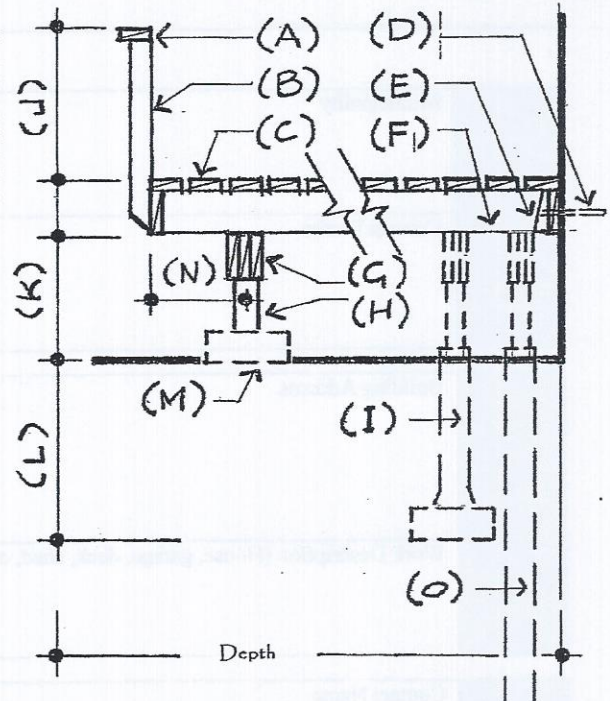
Form#
2010-041

Information	Name	
	Address	
	Phone#	
	Email	

SIZE	Deck A	Width		Depth	
	Deck B	Width		Depth	
	Deck C	Width		Depth	

NOTES:

- Decks greater than 24" off ground and/or greater than 32 sq. ft. must have piles or piers.
- Piles for decks under 100 sq. ft. must be 8" x 8" over 100 sq. ft. 12" x 12"
- If your deck has multiple sizes and/or levels provide detailed drawings.
- Beams must be nailed together, set on top of the posts & secured with a metal bracket
- Piers must be a minimum of 48" deep and have a pad



Deck Details	Area	Item	Description (fill in below)
	A	Railing Type: e.g.: Spindle, Glass, Metal:	
	B	Spacing between Balusters or edge of glass:	Maximum spacing 4" (100mm) on center
	J	Railing Height: 36", if >6' above ground 42":	
	C	Decking Type: e.g.: 2x6, 5/4 treated, Vinyl,:	
	D	Anchorage to the house or foundation:	Require 1/2" Bolts or lags 32" on center or better
	E	Joist hangers: Are Required:	Unless joists have 1 1/2 solid bearing below
	F	Joist Type: e.g. 2x6, 2x8 2x10, Spruce or Fir:	
	G	Beam Type: e.g. 2x6, 2x8 2x10, Spruce or Fir:	
	G	Beam Plies: 2-ply, 3-ply 1-ply not allowed:	
	N	Cantilever length: Joists and Beams:	Maximum: 2x6-12"; 2x8-16"; 2x10-24"
	H	Post type, Size, Type e.g. 6"x6" Treated:	
	H	Spacing between Posts: e.g. 8'0":	
	K	Height bottom of joists to the ground:	
	I	PIERS: Pier Type: e.g. 12" Concrete:	
	L	PIERS: Depth of Pier: minimum 48":	
	M (I)	Pad Size: Ground Level or Piers:	
	O	PILES: Pile size and depth (see note above):	
	O	PILES: Screw Piles: Type, Depth and Brand:	